

Tech Zone



ImagingWorld

The Most Trusted Name in Print in 5 Languages

REMANUFACTURING THE SAMSUNG PROXPRESS SL-M4530 SERIES TONER CARTRIDGE MLT-D304



Watch inTouch TV News Daily Online



SUPPLEMENT



Mike Josiah

Remanufacturing the Samsung ProXpress SL-M4530 Series Toner Cartridge MLT-D304

The Samsung ProXpress SL-M4530 printer engine is based on a 47ppm, 1200 x 1200 DPI laser engine. These machines have a first page out as fast as 6.5 seconds, and come standard with 512Mb of memory, (expandable to 2GB). The SL-M4530 series also has duplexing built in. New printers in this series come with starter toner cartridges which are rated for 7000 pages.

There are three different toner cartridges available for these machines. The MLT-D304S STD cartridges are rated for 7,000 pages, the MLT-D304L HY cartridges are rated for 20,000 pages and the MLT-D304E EHY cartridges are rated for 40,000 pages.

The toner cartridge is basically just a large tank and is very easy to remanufacture.

Current machines released so far for this series are:

ProXpress SL-M4530
ProXpress SL-M4583

The cartridges costs are fairly high so these are very profitable to do!

MLT-D304S	\$152.99*
MLT-D304L	\$244.99*
MLT-D304E	\$393.99*

*Pricing as of 6/1/19

Required Tools

- Toner approved vacuum.
- Phillips Head Screwdriver
- Small Common jewelers Screwdriver

Required Supplies

- Toner for use in the ProXpress SL-M4530 series of cartridges.
- Replacement chip
- Replacement seal
- Toner magnet cloths

step > 1 Vacuum the exterior of the cartridge.



step > 2 On the right or Gear Side of the cartridge, remove the three screws and end cap.



step > 3 Carefully pry up the fill plug. The plug is glued in but can be broken free by prying it up from all sides a little at a time until it breaks free.

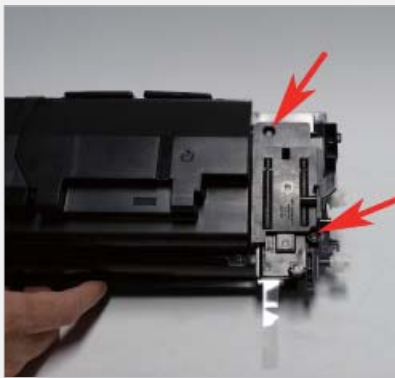
step > 4 Remove all remaining toner.



step > 5 Remove the 2 screws from the spring loaded port cover assy.



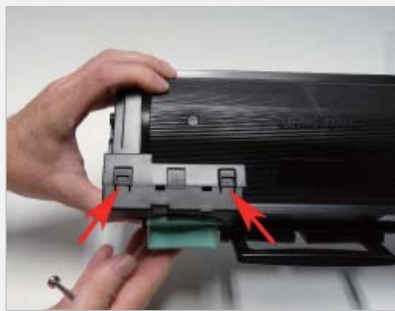
step > 6 Clean the port seals and install a new seal. (You can make one from clear tape folded back on itself until one is available).



step > 7 Replace the port cover assy. and two screws.



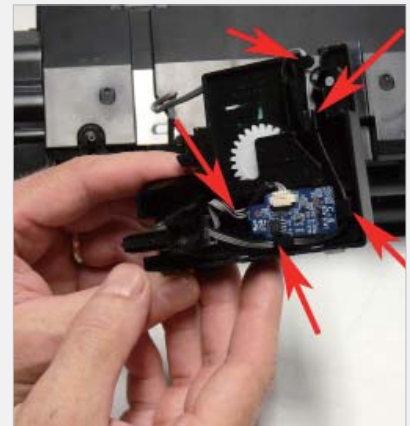
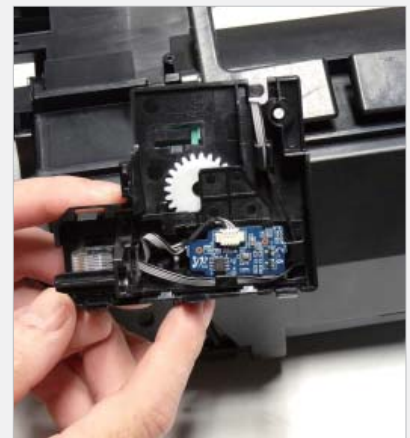
step > 8 Remove the screw located next to the large green knob.



step > 9 Press in on the three tabs to loosen the cover. Be careful not to break the alignment tab.



step > 10 Lift up on the wire cover and remove.



step > 11 Replace the chip. Make sure the cable is fully seated in the new chip's connector. Also make sure the wires are tucked away so that they are not damaged when the chip carriage is moved.

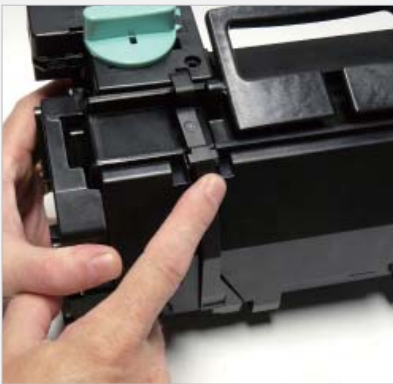


step > 12 On the opposite end of the wires is a toner sensor board. Shown here just for information purposes. There is no need to remove it.

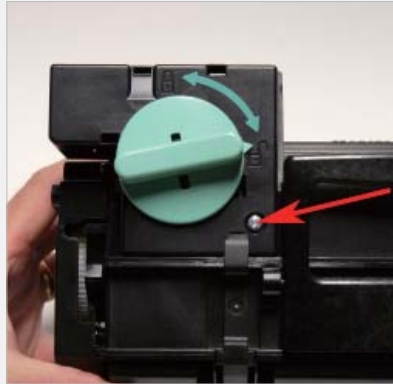
LOOKING FOR STEP-BY-STEP GUIDES FOR CARTRIDGES?



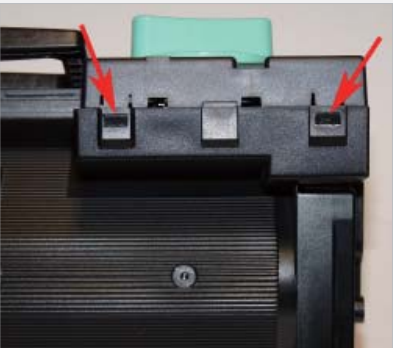
Mike Josiah's popular toner cartridge procedures are available in hardcopy format in some regions, and online to all regions as a library of cartridge models—sponsored by UniNet Imaging: www.uninetimaging.com



STEP > 13 Snap the wire cover back in place.



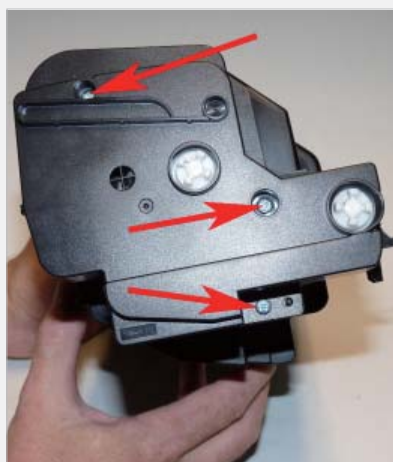
STEP > 15 Install the screw.



STEP > 14 Press the chip housing back in place. Make sure the three tabs are locked and the cover is fitting properly around the alignment tab.



STEP > 16 Fill the hopper with the appropriate amount of toner for use in the ProXpress SL-M4530 series of cartridges.



STEP > 17 Replace the gear side end cap and three screws.



WE CAN HELP YOU
TO COMMUNICATE
WITH THE WORLD!

f 21,000+ followers
ID: recyclingtimes

t 18,500+ followers
ID: Recycling_Times

in 8,500+ followers
ID: tonyleertm

YouTube 20,000+ video views
ID: Recycling Times Media

v 5,000+ weekly news viewers
ID: intouchnews

头条 760,000+ annual
page views

RT Media:
15,000+ Followers

3D Printing World:
50,000+ Followers